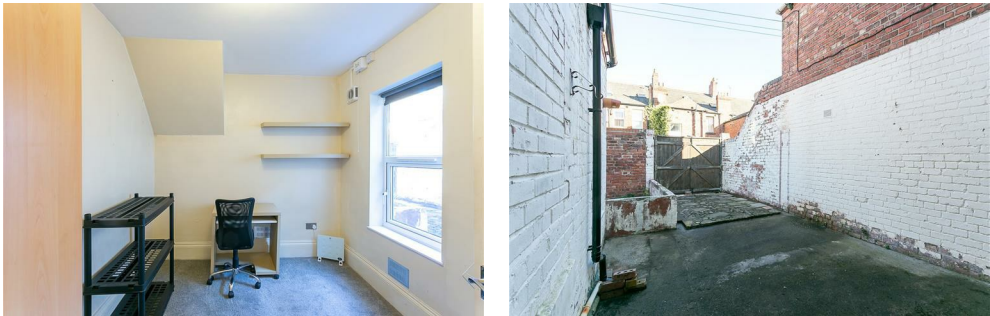




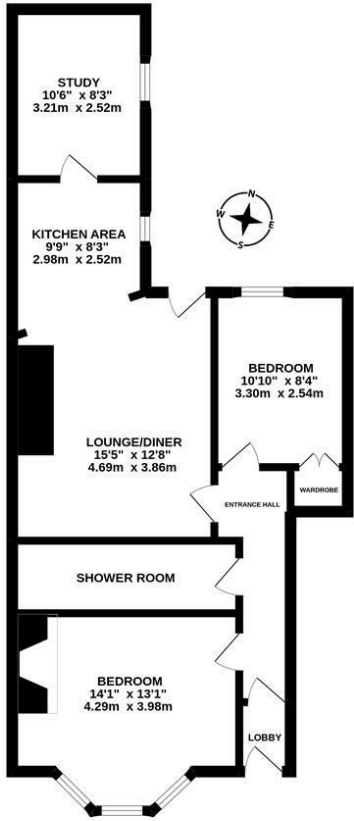
With no onward chain, this three bedroom lower 'Tyneside' flat is ideally located on Glenthorn Road, Jesmond. Glenthorn Road, tucked just off St Georges Terrace and Lonsdale Terrace, is ideally placed to give easy access to West Jesmond Metro Station, the shops of Acorn Road as well as the excellent nightlife of Osborne Road.

The accommodation briefly comprises: entrance lobby through to entrance hall; open plan lounge/diner and re-fitted kitchen area with access to the rear yard; three bedrooms; shower room and a private rear yard. Double glazed throughout with gas 'Combi' central heating early viewings are advised.

Lower 'Tyneside' Flat | Two/Three Bedrooms | 703 Sq ft (65.3m2) | Open Plan Lounge/Kitchen & Diner | Fully Double Glazed | Gas 'Combi' Central Heating | Private Rear Yard | No Onward Chain | Leasehold - Tyneside Lease with Peppercorn Rent | Council Tax Band B | No Onward Chain | Popular Location | EPC Rating : C



GROUND FLOOR  
691 sq.ft. (64.2 sq.m.) approx.



TOTAL FLOOR AREA : 691 sq.ft. (64.2 sq.m.) approx.  
Whilst every attempt has been made to ensure the accuracy of the floorplan contained herein, measurements of doors, windows, rooms and any other items are approximate and no responsibility is taken for any error, omission or mis-statement. This plan is for illustrative purposes only and should be used as such by any prospective purchaser. The services, systems and appliances shown have not been tested and no guarantee as to their operability or efficiency can be given.  
Made with Metropix ©2022

Offers Over £200,000

**IMPORTANT NOTE:** These particulars and the descriptions and measurements herein do not constitute representation and whilst every effort has been made to ensure accuracy, this cannot be guaranteed.

